

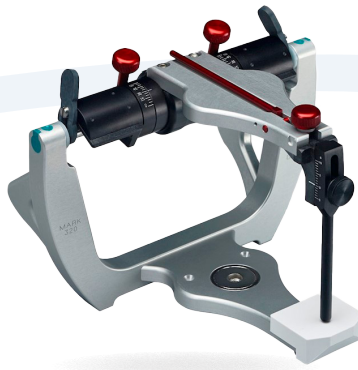


# RESTORATIVE ORAL HEALTH Comprehensive Occlusion Products

PRECISION | COMPREHENSIVE SOLUTIONS | SIMPLY DEPENDABLE



DENAR® MARK 310



DENAR® MARK 320



DENAR® MARK 330



MODEL 2240Q



WIDE-VUE



Call Whip Mix Customer service @ 800-626-5651 or your Dealer to order.



# Whip Mix® Articulators & Facebows



## WHIP MIX MODEL #2240Q ARTICULATOR | ITEM #34219\*

- ✓ Adjustable condylar inclination: 0° -70°  
Immediate side shift: 0-3mm
- ✓ Fixed progressive side shift: 7½°
- ✓ ¾" (19mm) curved eminentia

\*To convert to a non-magnetic system order screw #34332 upper & #34330 lower.

## 9155Q FACEBOW W/ QUICK LOCK TOGGLE | ITEM #34344

- ✓ Indirect mounting
- ✓ Compatible with 2000, 3000, and 4000 series Whip Mix® articulators (adaptable with Whip Mix® 8500 and Hanau® Wide-Vue with additional accessories)
- ✓ Comes complete with Whip Mix® indirect facebow, Quick Lock Toggle assembly, transfer base assembly, 9659 facebow fork and 8686 support bar.

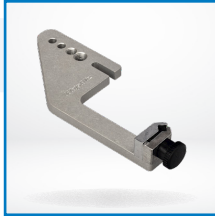


## 9185 QUICK MOUNT FACEBOW INDIRECT | ITEM #34126

- ✓ Compatible with 2000, 3000, and 4000 series Whip Mix articulators (adaptable with Whip Mix® 8500 and Hanau® Wide-Vue with additional accessories)
- ✓ Comes complete with Whip Mix® indirect facebow, transfer assembly, transfer base assembly, 8610 facebow fork



# Whip Mix® Articulator Accessories



**9176A TRANSFER  
BASE ASSEMBLY**  
ITEM #34444



**9176QA "QM"  
MAGNETIC TRANSFER  
BASE ASSEMBLY**  
ITEM #28705



**8587 FORK  
SUPPORT**  
ITEM #33359



**"QM"  
FORK SUPPORT**  
ITEM #28706



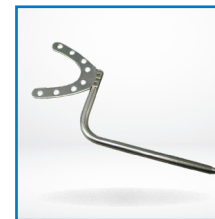
**8533 DOVETAIL  
INCISAL BLOCK**  
ITEM #18870



**#9659 DENTULOUS  
FACEBOW FORK FOR  
QUICK LOCK TOGGLE**  
ITEM #34340



**#9661 EDENTULOUS  
FACEBOW FORK FOR  
QUICK LOCK TOGGLE**  
ITEM #34333



**#8610 CURVED DENTULOUS  
FACEBOW BITEFORK**  
ITEM #04466



**#9640 QLT ASSEMBLY  
FOR INDIRECT  
MOUNTING**  
ITEM #34346



**#9640 QLT ASSEMBLY  
FOR DIRECT CONVERSION**  
ITEM #34341



# Denar<sup>®</sup> Articulators



## DENAR MARK 310 ADONIZED |

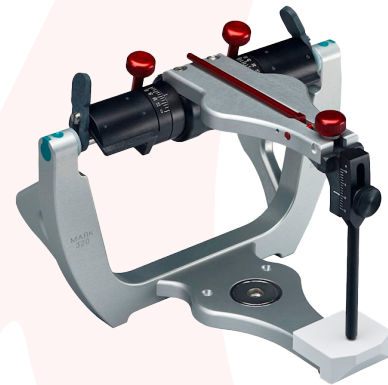
ITEM #20011377\*

- ✓ Condylar inclination: Fixed at 25°
- ✓ Progressive side shift: Fixed at 15°

---

## DENAR MARK 320 ADONIZED | ITEM #20011378\*

- ✓ Adjustable condylar inclination: 0°-60°
- ✓ Progressive side shift: Fixed at 15°



---

## DENAR MARK 330 ADONIZED |

ITEM #20011408\*

- ✓ Adjustable condylar inclination: 0°-60°
- ✓ Adjustable immediate side shift: 0mm-2mm
- ✓ Adjustable progressive side shift: 0° -15°

*\*Accuracy is within a 20-micron tolerance, making it an ideal fit for your digital workflows*



## **SLIDEMATIC FACEBOW W/ 1 DENAR® INDEX | ITEM #200011-2**

Comes complete with one measuring bow, Denar transfer assembly, index, reference plane locator, marker, and levels (cast support sold separately except for the Hanua Index)

---

## **SLIDEMATIC FACEBOW W/ 1 QUICK LOCK TOGGLE | ITEM #200012-1**

Comes complete with one measuring bow, Denar transfer assembly, index, reference plane locator, marker, and levels (cast support sold separately except for the Hanua Index)



---

## **SLIDEMATIC FACEBOW W/ 1 HANAU® INDEX AND MAXILLARY CAST SUPPORT | ITEM #20009833**

- ✓ The precision speed-glide gear mechanism permits the facebow to open and close laterally.
- ✓ Convenient detachable transfer assembly mounts to the articulator, freeing the facebow for the next patient
- ✓ Adaptable to all Denar®, Hanau™, and Whip Mix® articulators.



# Slidematic Accessories



**MAXILLARY CAST SUPPORT**  
ITEM #003401-000



**WHIP MIX MAGNETIC CAST SUPPORT WITH BOOT**  
ITEM #20011391



**SLIDEMATIC DENTULOUS BIFURK**  
ITEM #200029



**SLIDEMATIC EDENTULOUS BIFURK**  
ITEM #200030



**DENTULOUS BIFURK FOR DENAR SLIDEMATIC QLT**  
ITEM #200038



**REFERENCE PLANE LOCATOR RULER**  
ITEM #3266



**REFERENCE PLANE MARKER**  
ITEM #3265



**SLIDEMATIC FACEBOW LEVEL - 2 PK.**  
ITEM #20002951



**DENAR ARTICULATOR INDEX**  
ITEM #200080



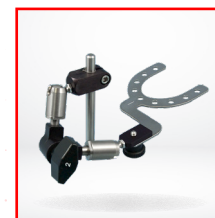
**HANAU ARTICULATOR INDEX W/ CAST SUPPORT**  
ITEM #20009819



**SHAFT ASSEMBLY FOR DENAR SLIDEMATIC**  
ITEM #200016-1



**COMPLETE TRANSFER JIG ASSEMBLY FOR DENAR SLIDEMATIC**  
ITEM #200009-1



**BIFURK/SHAFT ASSEMBLY FOR DENAR SLIDEMATIC QLT**  
ITEM #200008



**BIFURK/SHAFT ASSEMBLY FOR DENAR SLIDEMATIC**  
ITEM #200007



# Hanau Articulators, Facebows, and Accessories



## WIDE-VUE SEMI ADJUSTABLE\* | ITEM #010885-000

- ✓ Closed tracking fossa and fixed upper member  
Progressive Side Shift: 0°-30°
- ✓ Protrusive angle: -20°-+60°

\*Optional magnetic converter plate & compatible with slidematic facebow

## SPRINGBOW EARPIECE FACEBOW | ITEM #010328-000

- ✓ Allows indirect or direct mounting to Hanau articulators
- ✓ Automatically self-centers for outstanding accuracy
- ✓ Comes complete with Springbow, transfer clamp assembly, mounting platform with built-in cast support, bite fork, and bite planes



## Hanau Accessories



**TRANSFER CLAMP ASSEMBLY**  
ITEM #010356-000



**MOUNTING PLATFORM**  
ITEM #010342-000



**DENTULOUS BITEFORK**  
ITEM #005727-000



**EDENTULOUS BITEFORK**  
ITEM #005726-000

# Universal Occlusal Stand & Remounting Jig Selection Guide

Description	Item Number			
Denar Universal Occlusal Stand*	20011720	✓	✓	✓
Remounting Record Jig	009544-000		✓	
Denar® Remount Record Jig	20011730			✓
Whip Mix® 8579 "QM" Remounting Jig	03737	✓		
#8575 Remounting Jig	03735	✓		
2224Q Two Dimensional Occlusal Template Stand	34211	✓		

\*Accepts the Kois Facial Plane Analyzer Index Tray ✓ = Compatible with

## DENAR® UNIVERSAL OCCLUSAL STAND ACCESSORIES



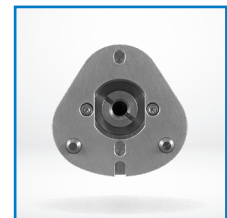
**FLAT TABLE**  
(ACCEPTS KOIS  
INDEX TRAYS)  
ITEM #20011713



**CURVED TABLE**  
ITEM #34213



**FENCE**  
ITEM #20011717









**TAPER PIN (1)**  
ITEM #20011665

The Denar® Universal Occlusal Stand allows you to mount the working casts at Bonwill's Equilateral Triangle on Denar®, Hanau™, and Whip Mix® articulators.






# Incisal Pins and Tables Selection Guide

INCISAL PINS SELECTION GUIDE				
Description	Item Number	 2000	 Wide-Vue	 310, 320, & 330
2201 Dual-End Incisal Pin	01740	✓		
Dual-End Incisal Pin 120mm	010739-000		✓	
Mark 300 Short Round Pin w/ Support (P4)	20011386			✓
Mark 300 Tapered Pin w/ Support (P6)	20011397			✓

INCISAL GUIDE TABLE SELECTION GUIDE				
Description	Item Number	 2000	 Wide-Vue	 310, 320, & 330
Custom Platform, Flat (T4)	110240 110240-12*			✓
Adjustable Incisal Table (T6)	110635			✓
Adjustable Incisal Guide Table	010731-000		✓	
Adjustable Incisal Guide Table For Whip Mix Articulators	010631-000	✓		
Flat Plastic Anterior Guide	010741-000(1) 009487-000(3) 009489-000(12)**		✓	
8533 Dovetail Incisal Block	18870	✓		
Flat Plastic Incisal Table	04235***	✓		

✓ = Compatible with \*Package of 12 \*\*Thumbscrew order seperately, Item #010717-000 \*\*\*Thumbscrew order seperately, Item #04243

# Mounting Plates Selection Guide

Description	Item Number			
QM White Plates with Metal Disks	28701 (20) 28710 (100)	✓	✓	
QM 13mm Plate Holder	28703	1	1	
QM 25mm Plate Holder	28704	1	1	
QM Kit 13mm/25mm	28707	✓	✓	
QM Kit 13mm/13mm	28708			
8580B Plastic Mounting Plates Screw Type	28495 (20) 28509 (100) 28517 (500)	✓		
8580 Metal Mounting Plates (2) Screw Type	03867	✓		
Disposable Mounting Plates Screw Type	1100026-10 1100026-50 1100026-100		✓	
Converter Plates (2)	20002367		✓	
Converter Plates for Whip Mix® Articulators (2)	20003145	✓		
Disposable Mounting Plates Magnetic works with converter plates	20002368 (20) 20002369 (100)	✓	✓	
Disposable Mounting Plates for Mark 300 Series Magnetic	20011577 (20) 20011578 (100)			✓
Metal Mounting Plates (2) Screw Type	005057-000		✓	

✓ = Compatible with

1 2 = Number of items to purchase for the articulator

Call Whip Mix Customer service @ 800-626-5651 or your Dealer to order.